

INTREPID NETWORKS
PRODUCT INFORMATION SERIES

Mutual Aid Channels

NUMBER 03 - 2022

**Share One Common Operating
Channel when Responding to
Mutual Aid Incidents with
Response for FirstNet.**

MUTUAL AID CHANNELS

Communication, Collaboration, and Coordination are critical when mounting a coordinated multi-agency incident response.

The need is growing for effective Mutual Aid across public safety agencies. Whether it be a hostage situation, a high-speed pursuit across jurisdictional boundaries, or a large-scale natural disaster – agencies routinely call upon each other for assistance.

Responders across multiple jurisdictions must collaborate quickly and securely, irrespective of organizational affiliation.

Successful Mutual Aid requires a common operating channel that enables critical mission information sharing for rapid, effective, and safe incident response.



MUTUAL AID CHANNELS

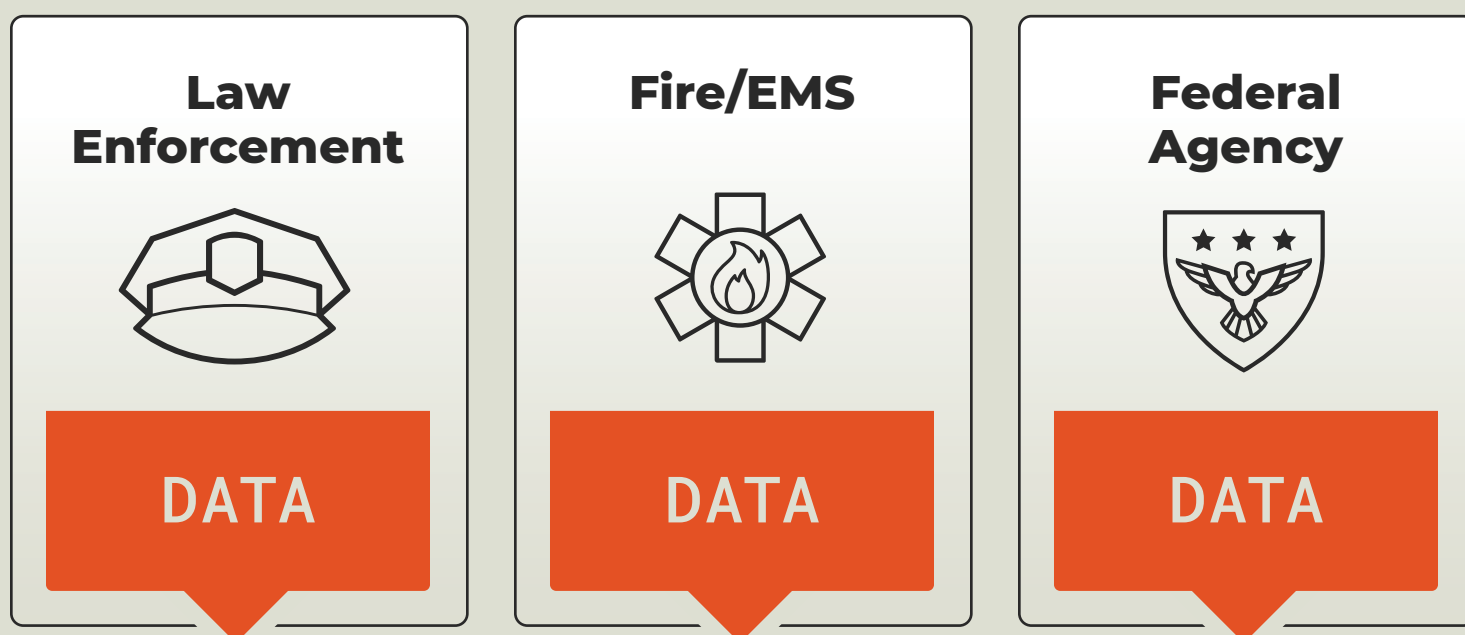
Coordinating across Disparate Agencies Can be Challenging.

One of the biggest challenges agencies face during mutual aid events is effectively sharing critical information with all responders on the scene. Sharing that critical information can be surprisingly complicated, with many organizations using different systems and equipment that don't interoperate. Agencies are often left to use unsecured chat rooms and public apps to fill those operational gaps.

These situations lead to poor information distribution, confusion and degraded information accuracy.

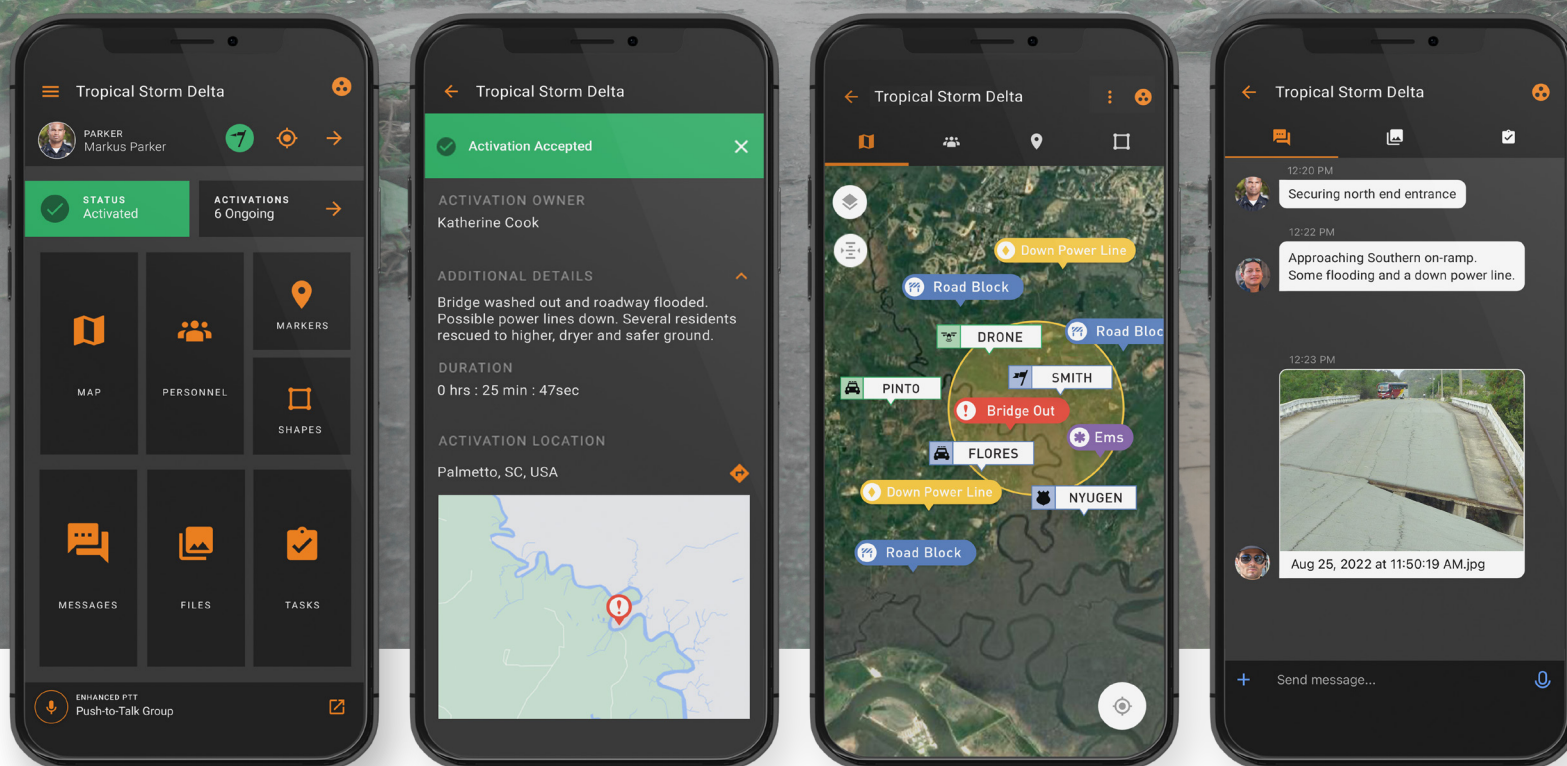
Agencies currently work in silos that don't allow teams to share critical information. These silos have multiple steps to get the information out causing delays in action.

Operating With Multiple Organizations During A Mutual Aid Event



Siloed systems result in poor information sharing and delayed response times.

Response for FirstNet Situational Awareness Platform



RESPONSE
DASHBOARD

EMERGENCY
MOBILIZATION

LIVE
MAPPING

INFORMATION
SHARING*

MUTUAL AID CHANNELS

Added to Mutual Aid Channel

You have joined **Mutual Aid Example**. This channel contains members from other Agencies. All other Visible Channels will be turned off on the map when viewing the shared channel for the first time.

DISMISS [VIEW CHANNEL](#)

Users receive invitation to join the Mutual Aid Channel for fast and effective coordination.

We Have a Better Way.

Agencies across police, fire, and medical services at all levels of Federal, State, and local jurisdictions can now securely communicate, collaborate, and coordinate in the field over a common operating picture with Intrepid Response for FirstNet Mutual Aid Channels.

With just a few clicks, your agency can create mutual aid shared channels and invite an unlimited number of agencies to join. All participating agencies can now work from the same real-time information from a shared map, and shared channel for communication exchange for complete interoperability.

* Coming in 2023

MUTUAL AID CHANNELS

How does the Channel feature work in the Response Platform?

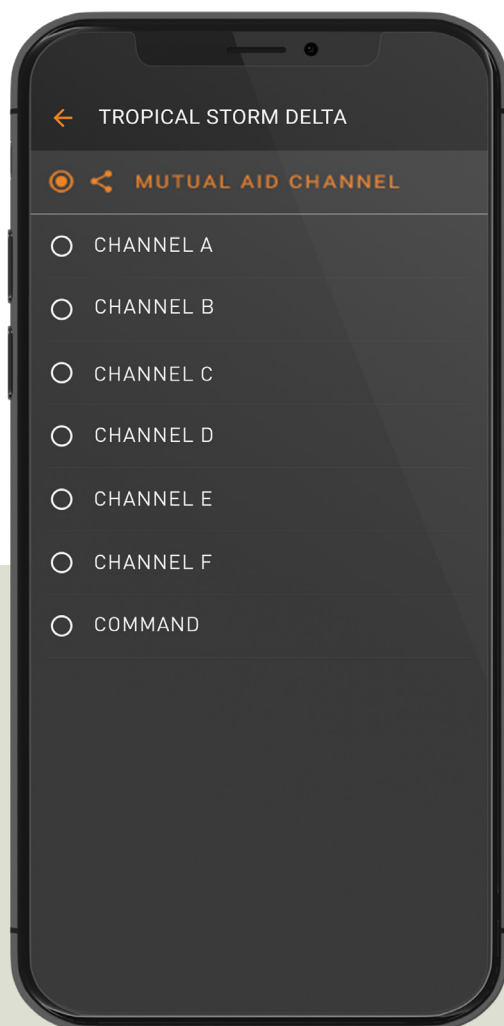
Channels allow agencies to manage multiple operations simultaneously. Only invited users can share and view operational data. Very similar to radio channels.

Teams can work in private channels for individual team coordination and then move to the Mutual Aid channel for larger event interoperability and coordination.

Commanders can toggle channels on/off to manage the visibility of one, more, or all teams.

Mutual Aid Channels

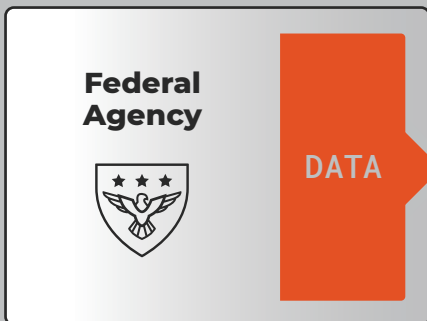
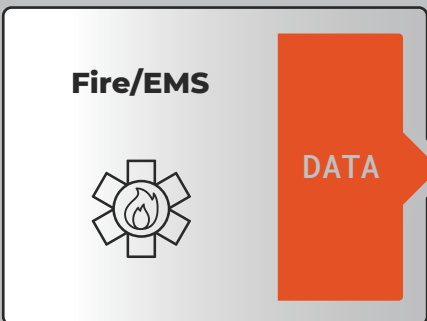
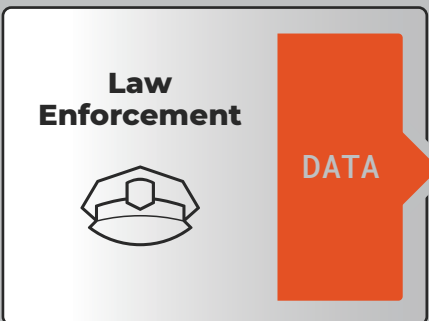
All responding agencies must be using the Response for FirstNet Platform to utilize the Mutual Aid Channels.



MUTUAL AID CHANNELS

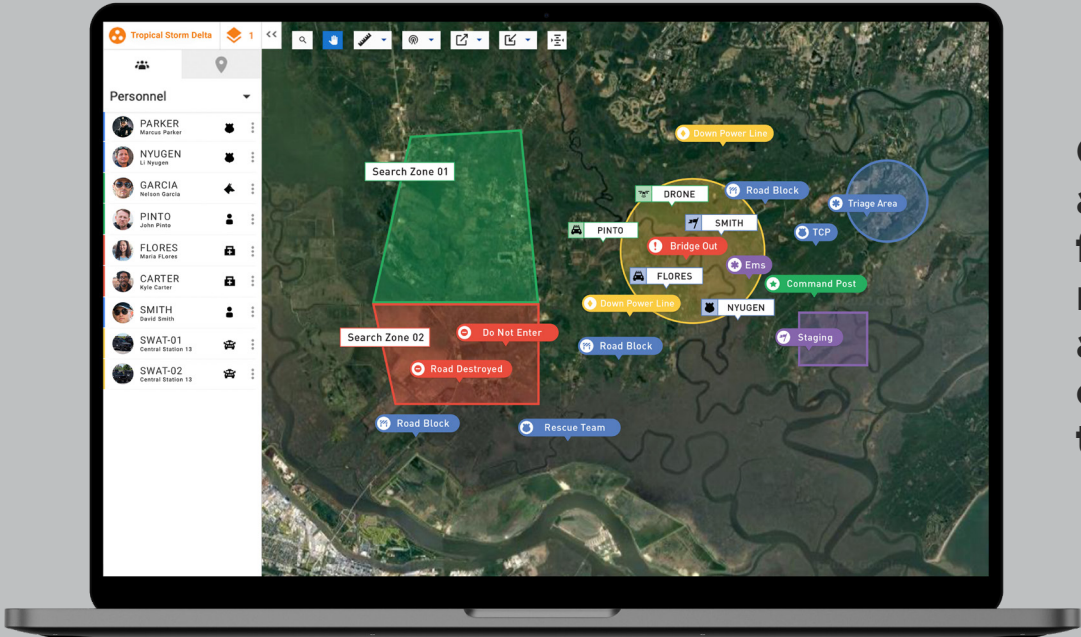
Advantages

- Secure communication over one common operating picture across police, fire, and medical services at all levels of Federal, State, and local jurisdictions.
- Persistent information sharing for intelligence gathering purposes to support crime control missions such as gang violence, drug crimes, trafficking, prisoner escapes and search and rescue operations.
- Live location updates for all responders in the field.
- Instantaneous creation and sharing of map markers and shapes.
- Sharing of digital media, videos, photos, whiteboarding, action plans, task lists, Incident Action Plans, and documents – Coming 2023.
- Excessive, confusing radio traffic is eliminated.
- Response times are significantly shorter, while response accuracy is significantly improved.



Response for FirstNet creates a Mutual Aid Channel to connect all agencies on one operational channel.

RESPONSE FOR FIRSTNET WEB CONSOLE



Offsite Supervisors and Commanders from any location can manage and monitor all activities and communications via the web console.

Mutual Aid Channels Significantly Reduce Radio Traffic and Decrease Response Times

The Response for FirstNetPlatform, can create multiple separate operating channels to ensure that the right people get the right information without overload, regardless of agency.

MUTUAL AID CHANNELS

How do Intrepid Mutual Aid Channels Work?

Add outside agencies to an Response for FirstNet Mutual Aid Channel for immediate interoperability.

Follow These Four Easy Steps.

1.

Agency (A) creates Mutual Aid Channel.



2.

Agency (A) adds its members, shapes, and markers to that channel.



3.

Agency (A) invites Agency (B) to Mutual Aid Channel.



4.

Agency (B) gets and accepts invite and adds its members, shapes, and markers to the Mutual Aid Channel.



Try it for FREE.

Sign up for a free month of Intrepid Response for FirstNet and see how Mutual Aid channels can help your organization.

Note

Involved agencies need to be Response for FirstNet subscribers, and/or an agency needs to have additional licenses to assign to another agency.

Communicate, Collaborate, Coordinate.

Response for FirstNet is a low-cost, simple-to-use web and mobile situational awareness platform for day-to-day and emergency operations. Mapping, Information Sharing, Team Mobilization, Emergency Notification and integrated Push-to-Talk voice communications all in one deployable solution.

Response for FirstNet is the first situational awareness application to utilize NextNav Z-Axis location. Know vertical locations of all personnel in dense urban areas and multi-story structures.

ADVANTAGES

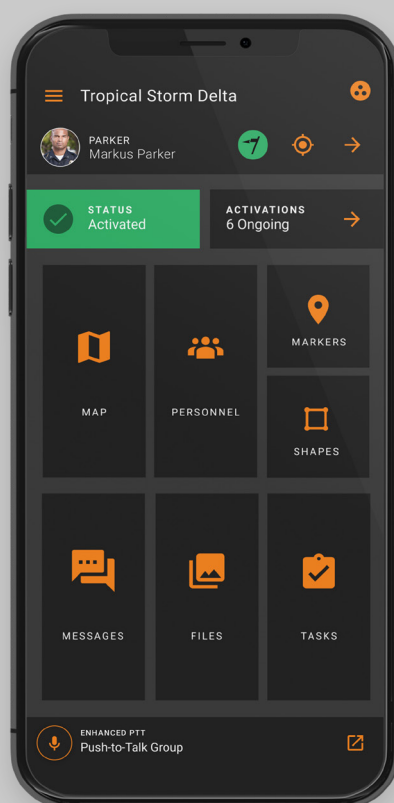
**Reduce
Radio Traffic**

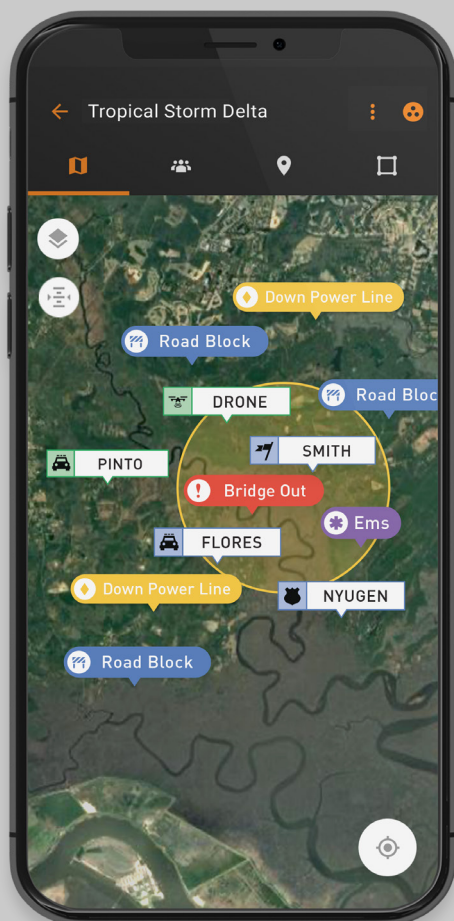
**Decrease
Response Times**

**Securely Share
Information**

**Increase
Responder Safety**


**Enhance
Situational
Awareness**





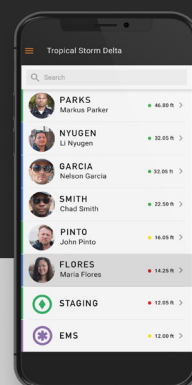
Z-Axis Vertical Location

Improve on-scene situational awareness and coordination by visualizing the exact vertical location of all personnel in dense urban areas or multi-story buildings. Click directly on a user icon to see that individuals' HAT (Height Above Terrain) value or view the entire team's HAT in the Altimeter view.



PARKS
Markus Parker

08/13/2021 at 14:12
28.553490, -81.366012
● HAT: 53 ft



**Coverage area
extends to 90%
of all buildings.***

*Inside a NextNav network coverage area

Locate

Geo-spatial solution with feature rich mapping. Monitor location of all personnel, tagged assets, and markers in real-time.

Features and Benefits – Real-time GPS location of all team members. – Dramatically reduce location radio traffic. – Improved coordination with teams outside of the vehicles. – Manage multiple simultaneous operations. – Auto-Navigate to personnel and markers – UAV Drone, GPS trackers, WIFI beacons and sensor integrations.

NEW: Landscape Mode – Landscape map mode for chest-mounting applications. Altimeter – View HAT of entire team or individual members.

AT&T Enhanced Push-to-Talk

EPTT is integrated directly into the Response dashboard via a customizable button location.

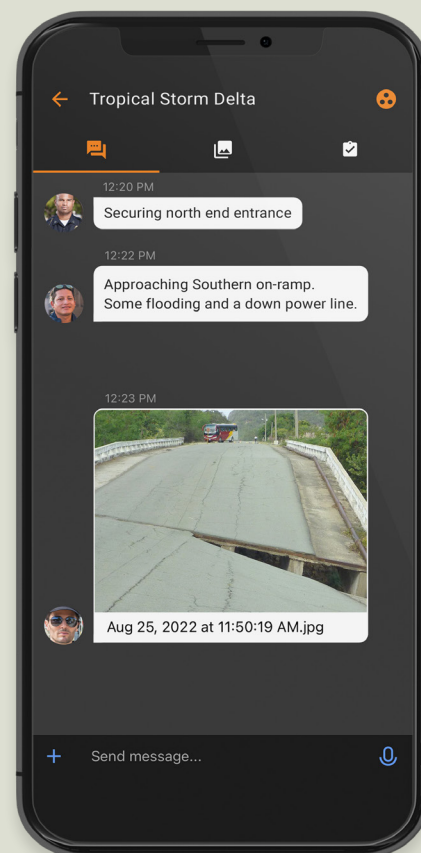
“We use Intrepid Response as our operating platform for all team activations.”

Commander Of The Scit, Brookfield, WI

Connect

A multi-layered collaborative workspace that provides highly secure team communications and sharing of digital content on demand.

Features and Benefits – Sharing of text, videos, photos, documents, and digital media with the entire team. – Collaborative documents and whiteboards. – Automated Task Management.



AVAILABLE IN:





See how Intrepid Response can help your organization.

[Intrepid-Networks.com](https://www.intrepid-networks.com)