

SUBURBAN CRITICAL INCIDENT TEAM (SCIT), A MULTI-JURISDICTIONAL SWAT TEAM.



DATE:
FRIDAY, NOVEMBER 6, 2020

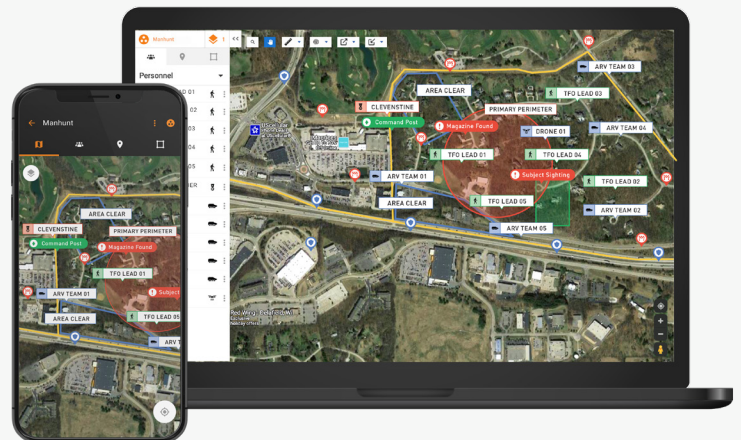
TIME:
0236 HRS

PLACE:
WAUKESHAU COUNTY, WI

CHALLENGE

On Friday November 6, 2020 at 0236hrs, the Waukesha County Suburban Critical Incident Team (SCIT) responded to a crime scene in the City of Delafield to support in the search for a suspect in the attempted homicide of two police officers. The complexity of the operation was challenging due to the diverse areas adjacent to the crime scene, which included an interstate highway, a large commercial business complex, some residential neighborhoods and also thick wooded areas.

The search area was so immense that five tactical teams were required to conduct a thorough grid search of the area to locate the suspect, who had fled on foot. These included: SCIT, Waukesha County Sheriff's Department, Tactical Enforcement Unit, City of Waukesha Police Department's SWAT team, Milwaukee Police Department Tactical Enforcement Unit and the Milwaukee FBI SWAT Team. Each team had their armed Response Vehicle positioned in a central area of the assigned search area with tactical operators on foot conducting a slow and organized search of the area. Drone overwatch was also included for each tactical team.



SOLUTION

Intrepid Response was invaluable to the success of the operation, as outlined by Detective Clevenshine, New Berlin Police Department, Commander-Suburban Critical Incident Team.

First – From the Command Post, we could track each operator and know their exact real-time location in the event and easily coordinate grid searches by multiple individuals. This was especially critical for operators searching the many thick, wooded areas who could not provide the CP with a good location in the event they needed assistance.

Second – The other tactical team commanders could look at my computer screen to see exactly where the SCIT operators were during the search. This benefited everyone, so we could ensure all the tactical teams were searching at the same pace and keeping a consistent search line.

Third – The ability for Operators to drop markers on the live map was critical. For example, a SCIT operator was able to drop a marker on the Intrepid response map to provide an exact latitude/longitude of a handgun magazine found on the ground in a marshy area, simply and accurately directing investigators to the magazine for documentation and collection. This magazine was later determined to be dropped from the suspect while fleeing.

BENEFIT

After an extensive search of the areas adjacent to the crime scene, we honed in on the suspect at a home located in the subdivision directly south of the commercial area we were searching. We were able to quickly move tactical resources to that area and located the suspect hiding in the backyard. The suspect was arrested without further incident.

“We use Intrepid Response for every tactical operation. I can’t imagine going back to the days of managing tactical operations without the useful features that Intrepid puts at my fingertips.”

– SCIT COMMANDER CLEVENSTINE

